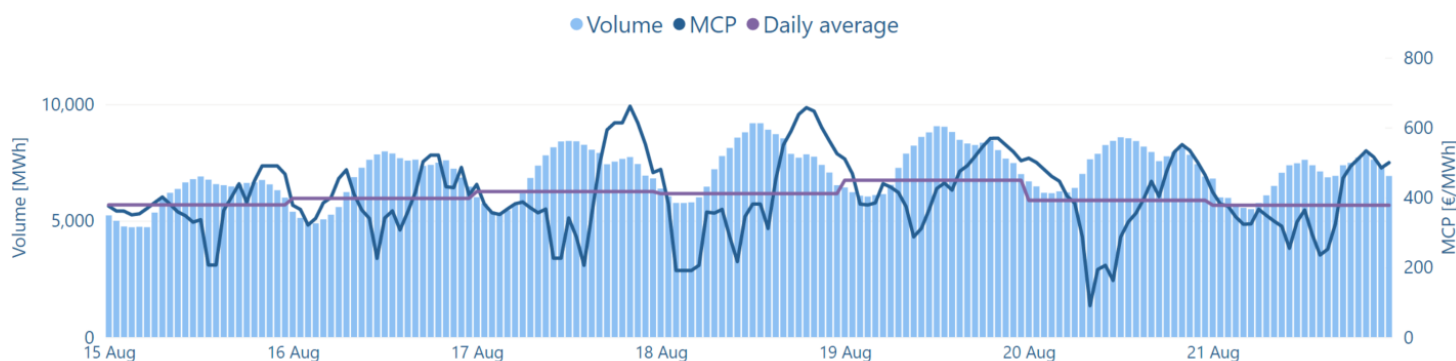


MCP
403.11 €/MWh

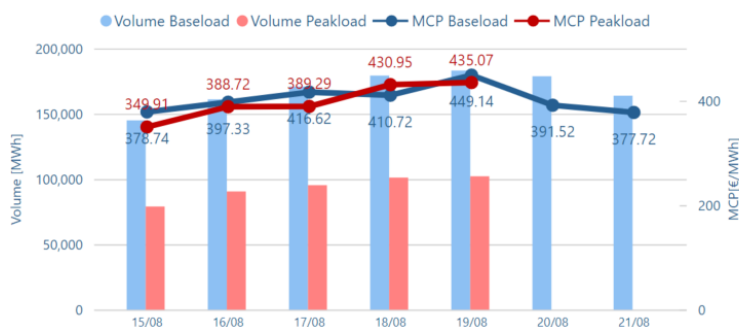
Volume
1,182 GWh

Value
478.8 M€

Hourly MCP & Volume



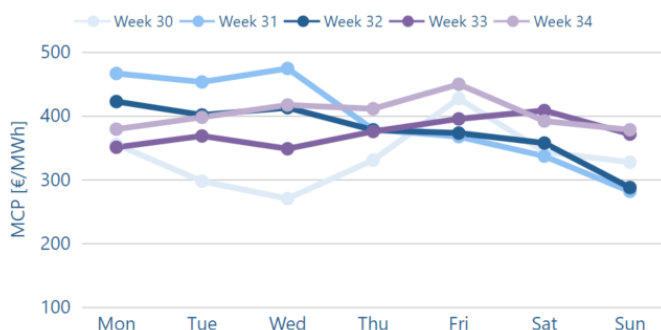
Daily MCP & Volume



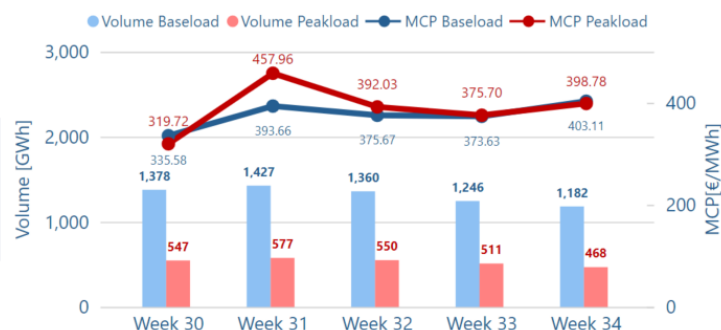
Data table

Delivery Date	MCP BL [€/MWh]	MCP PL [€/MWh]	Volume BL [MWh]	Volume PL [MWh]
15/08	378.74	349.91	145,048	79,027
16/08	397.33	388.72	161,117	90,579
17/08	416.62	389.29	170,914	95,371
18/08	410.72	430.95	179,325	101,197
19/08	449.14	435.07	183,164	102,196
20/08	391.52		178,808	
21/08	377.72		163,937	

MCP per Weekday



Weekly MCP & Volume



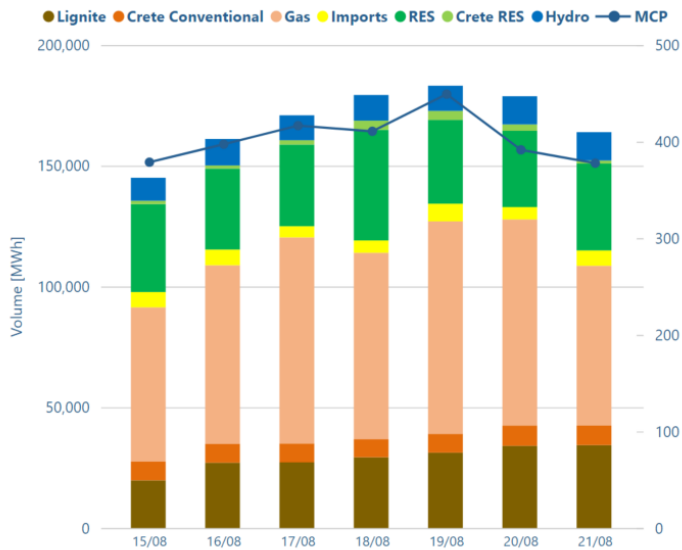
Day Ahead Electricity Market-Greek Bidding Zone

Week 34

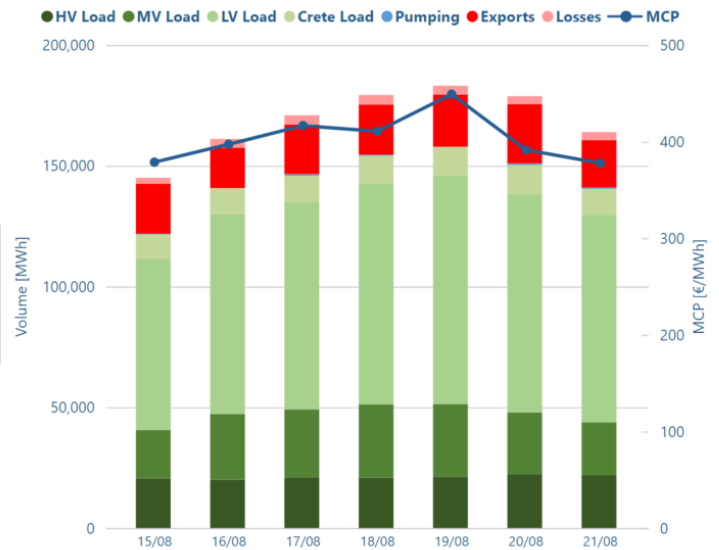
15/08/2022

21/08/2022

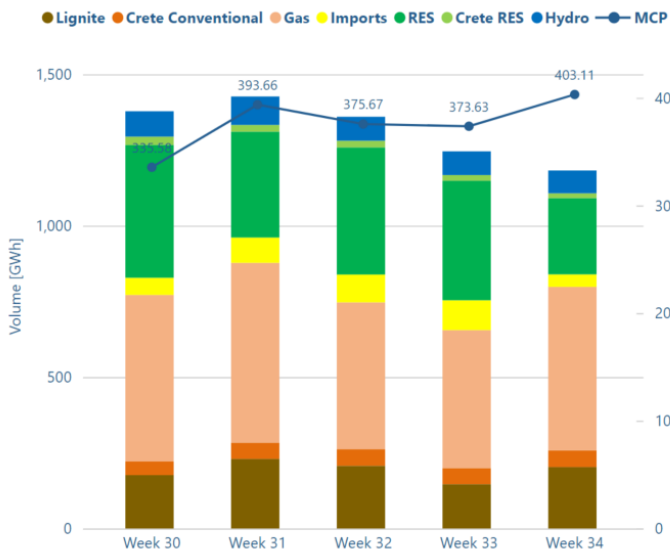
Daily Supply Mix



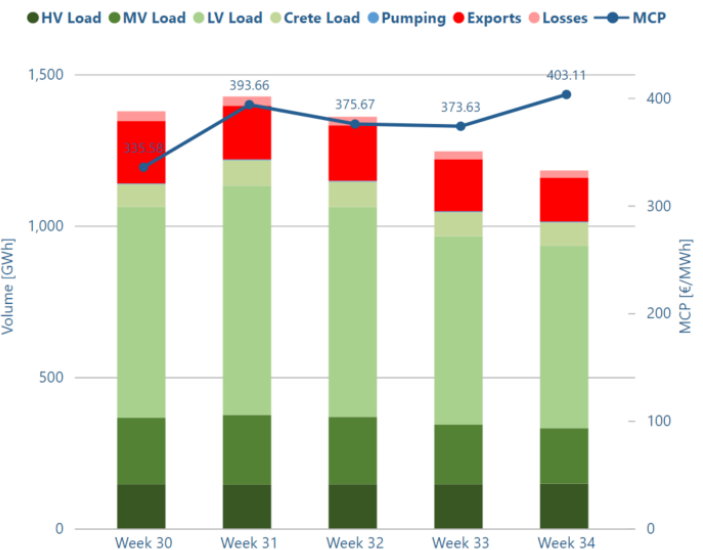
Daily Demand Mix



Weekly Supply Mix



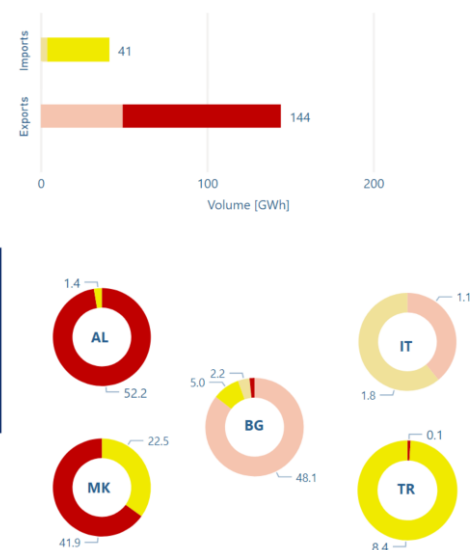
Weekly Demand Mix



Unmatched orders & traded volume



Cross Borders Volumes

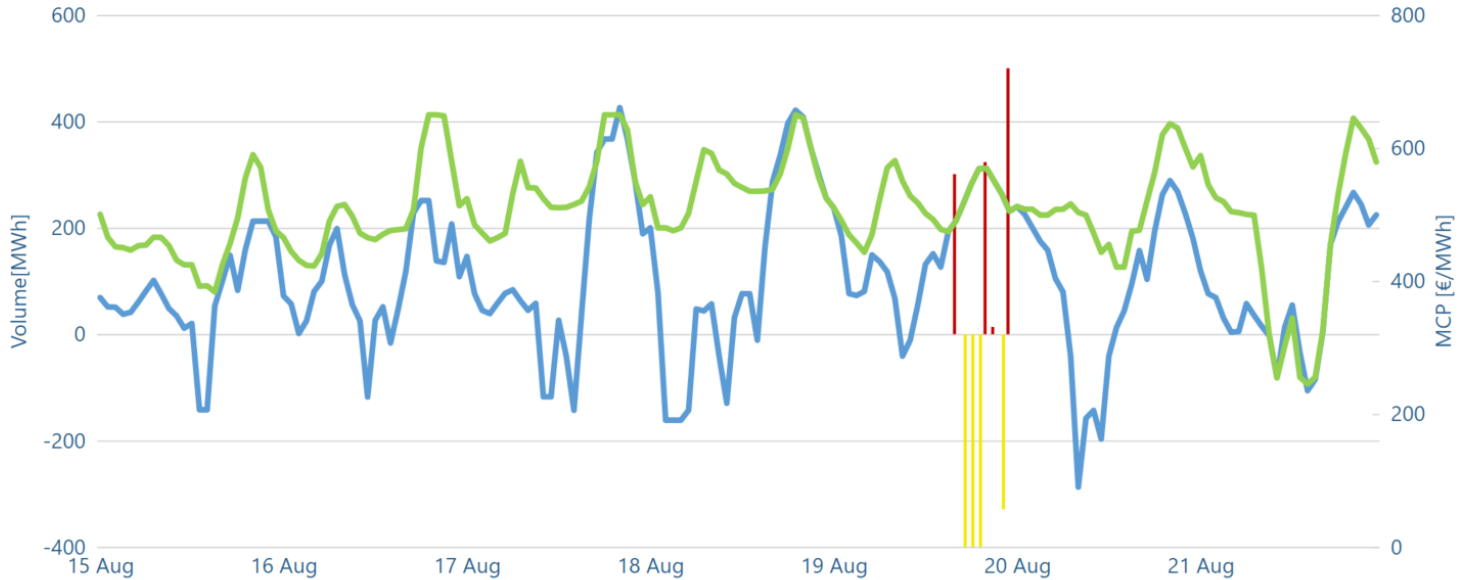


*The unmatched orders include all orders that have not been included in the algorithm (excluding block orders for sell side)

Exports-Implicit Allocation Imports-Implicit Allocation

Market Coupling Cross Border Flow

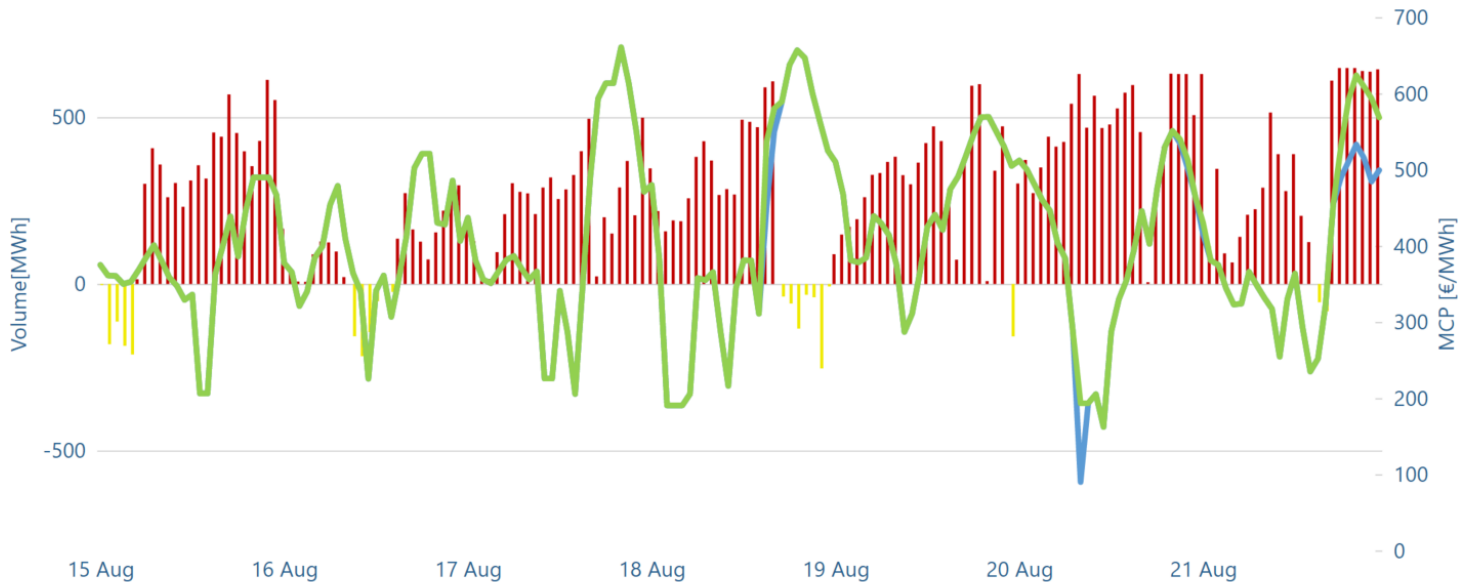
● Export ● Import ● GR MCP ● IT (SUD BZ) MCP*



*Datasource for IT (SUD BZ) MCP: <http://www.mercatoelettrico.org/En/Esiti/MGP/EsitiMGP.aspx>

**15-18/08 and 20-21/08 Interconnection with Italy had zero NTC

● Export ● Import ● GR MCP ● BG MCP*



*Datasource for BG MCP: <https://ibex.bg/markets/dam/dam-market-segment/>

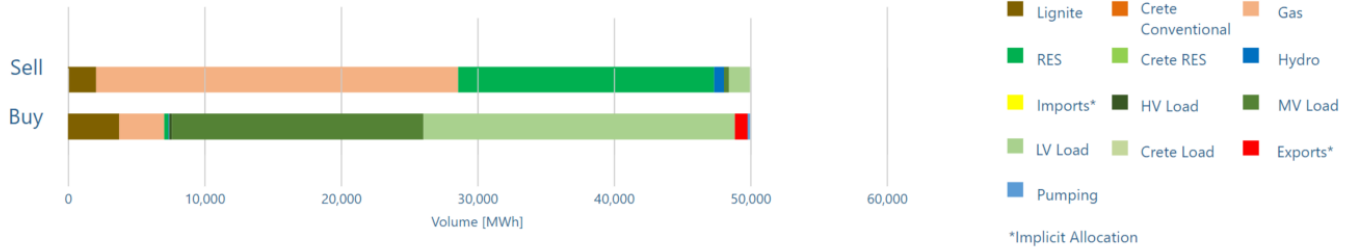
Intraday Electricity Market-Greek Bidding Zone

Week 34

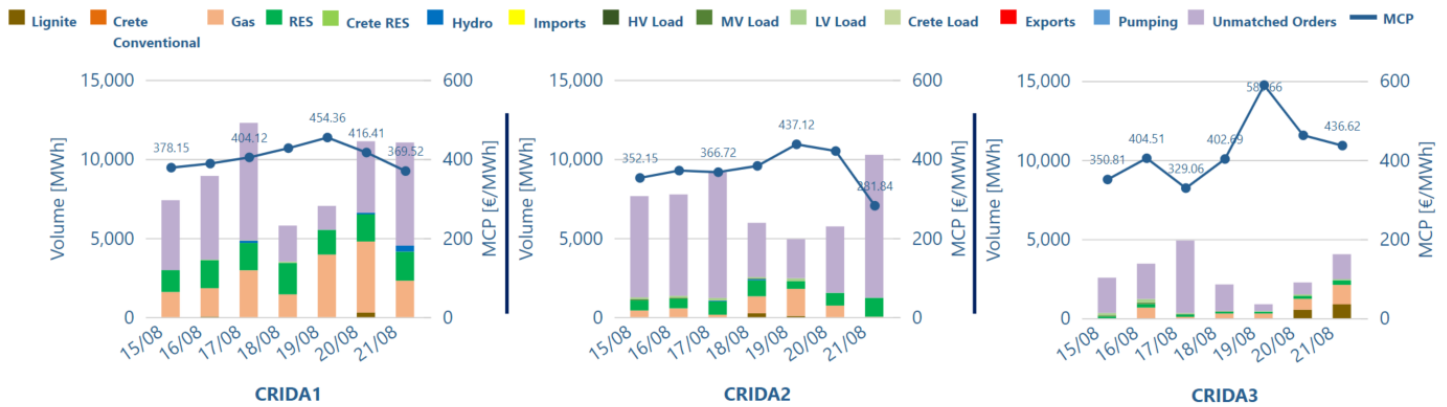
15/08/2022

21/08/2022

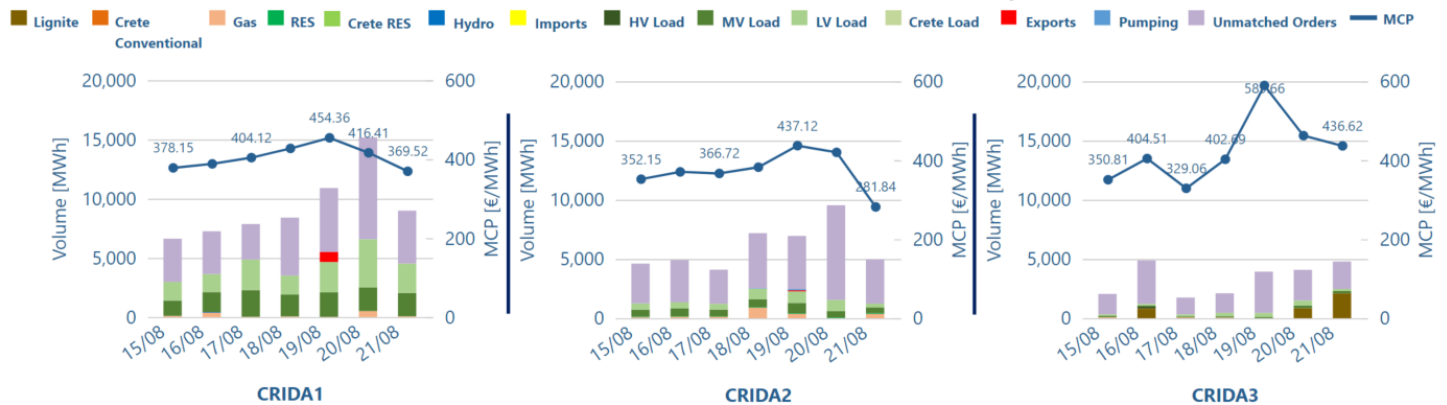
Aggregated traded volume



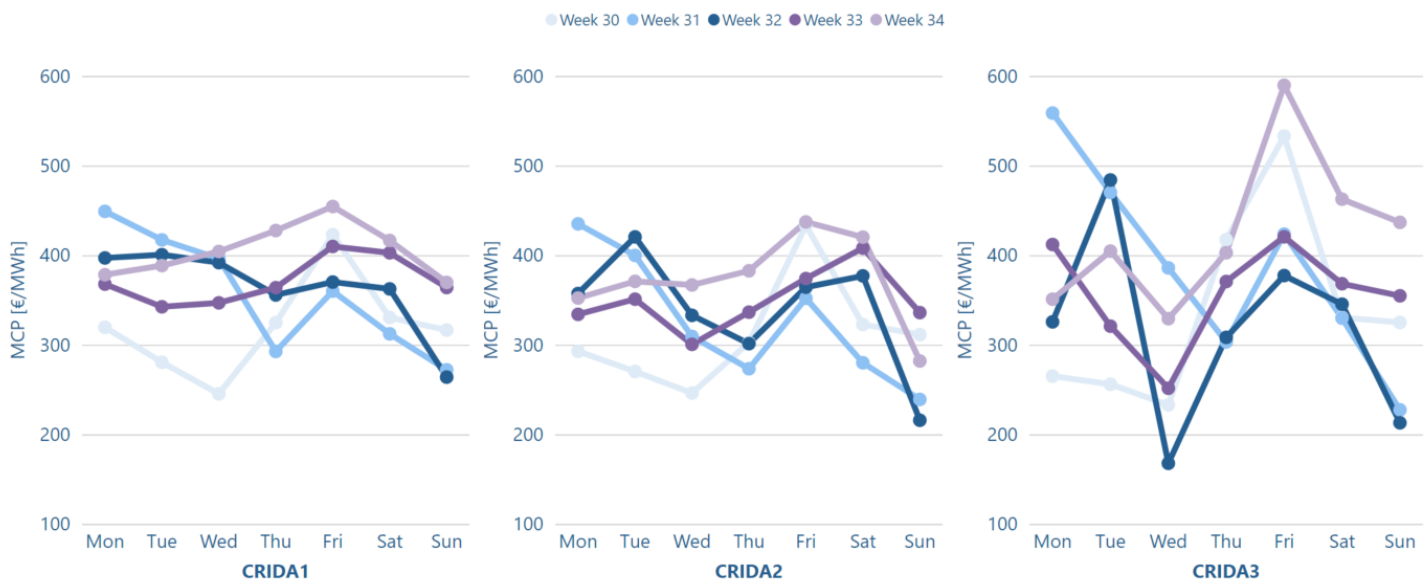
MCP, Volume & unmatched orders for Sell Side

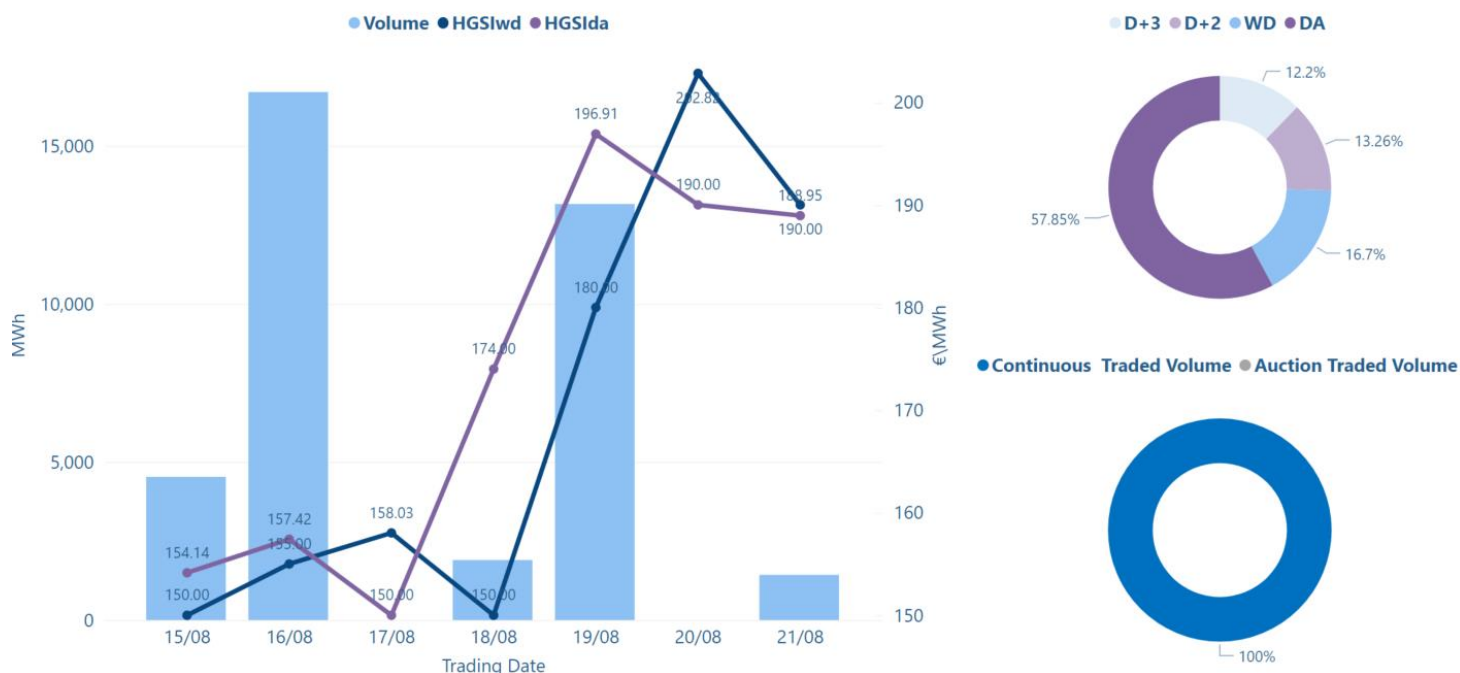


MCP, Volume & unmatched orders for Buy Side



MCP per Weekday





Volume, Closing, Min & Max Prices per Trading Date

